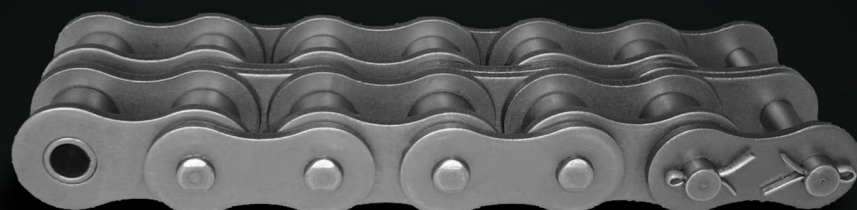
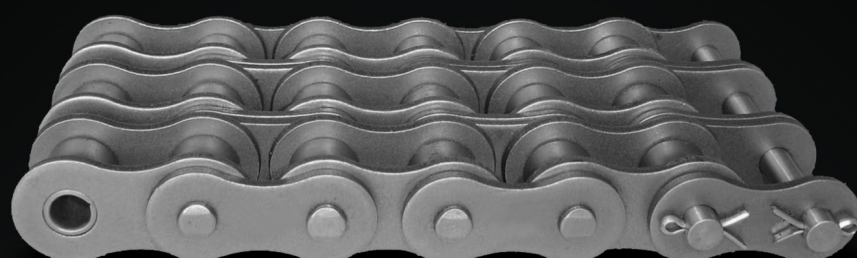
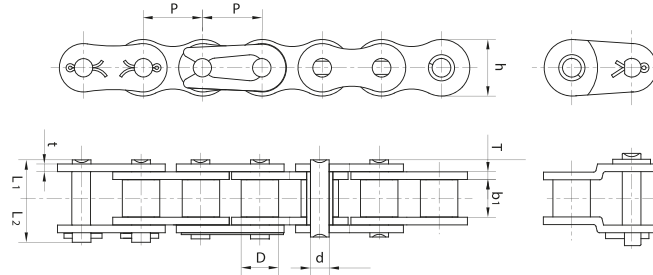


SHORT PITCH ROLLER CHAINS

A SERIES



A SERIES SHORT PITCH ROLLER CHAINS



DIN/ISO Chain No.	ANSI Chain No.	P mm	b ₁ (min) mm	D (max) mm	d mm	L ₁ mm	L ₂ mm	h mm	t/T mm	Q _{min} kN	Q ₀ kN	q kg/m
*04C-1	*25-1	6.35	3.1	3.3	2.31	3.9	4.8	5.9	0.75	3.5	4.6	0.14
*06C-1	*35-1	9.525	4.68	5.08	3.58	6	7.2	9	1.27	7.9	10.6	0.35
08A-1	40-1	12.7	7.85	7.92	3.96	8.3	9.6	12	1.52	13.8	18	0.66
10A-1	50-1	15.875	9.4	10.16	5.08	10.25	11.85	15	2	21.8	31	1.05
12A-1	60-1	19.05	12.57	11.91	5.94	12.65	14.35	18	2.4	31.1	42	1.56
16A-1	80-1	25.4	15.75	15.88	7.92	16.2	17.9	23.5	3.2	55.6	70.2	2.67
20A-1	100-1	31.75	18.9	19.05	9.52	19.8	23.3	30	4	86.7	115	4.04
24A-1	120-1	38.1	25.22	22.23	11.1	25	28.3	35.8	4.9	124.6	170	5.94
28A-1	140-1	44.45	25.22	25.4	12.7	26.9	30.9	41.5	5.6	169	213	7.5
32A-1	160-1	50.8	31.55	28.58	14.27	32.05	35.75	48	6.4	222.4	290	10.2
36A-1	180-1	57.15	35.48	35.71	17.46	36.35	40.75	54	7.2	280.2	340	13.95
40A-1	200-1	63.5	37.85	39.68	19.84	39.55	43.85	59.6	8	347	480	16.86
48A-1	240-1	76.2	47.35	47.63	23.8	47.6	52.4	71.5	9.6	500.4	620	24.25

Q_{min} Kn = Ultimate tensile strenght

Q₀ Kn = Average tensile strength

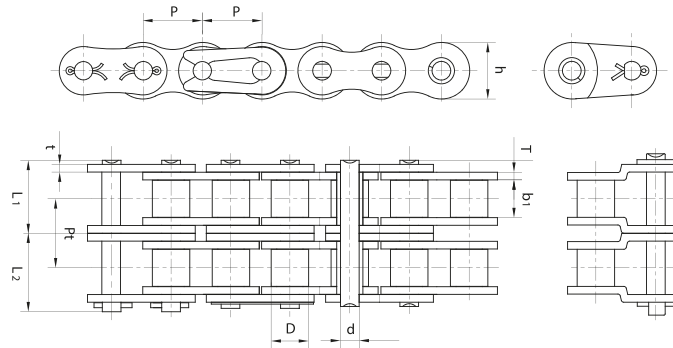
* chains: Bushing chains with no roller;

Connecting Type:

The series less than 16A (including 16A) is preferred for spring clip type;

The series larger than 20A (including 20A) is preferred for cottared type.

A SERIES SHORT PITCH ROLLER CHAINS



DIN/ISO Chain No.	ANSI Chain No.	P mm	b ₁ (min) mm	D (max) mm	d mm	L ₁ mm	L ₂ mm	h mm	t/T mm	Pt mm	Q _{min} kN	Q ₀ kN	q kg/m
*04C-2	*25-2	6.35	3.1	3.3	2.31	7.1	7.9	5.9	0.75	6.4	7	8.6	0.28
*06C-2	*35-2	9.525	4.68	5.08	3.58	11.1	12.3	9	1.27	10.13	15.8	20	0.69
08A-2	40-2	12.7	7.85	7.92	3.96	15.5	16.7	12	1.52	14.38	27.6	34.5	1.3
10A-2	50-2	15.875	9.4	10.16	5.08	19.3	20.7	15	2	18.11	43.6	59.5	2.08
12A-2	60-2	19.05	12.57	11.91	5.94	24.05	25.95	18	2.4	22.78	62.3	80.6	3.09
16A-2	80-2	25.4	15.75	15.88	7.92	30.75	33.15	23.5	3.2	29.29	111.2	134.8	5.29
20A-2	100-2	31.75	18.9	19.05	9.52	37.7	41.1	30	4	35.76	173.5	224.3	8.01
24A-2	120-2	38.1	25.22	22.23	11.1	47.75	51.05	35.8	4.9	45.44	249.1	326.4	11.84
28A-2	140-2	44.45	25.22	25.4	12.7	51.35	55.35	41.5	5.6	48.87	338.1	409	14.89
32A-2	160-2	50.8	31.55	28.58	14.27	61.35	65.05	48	6.4	58.55	444.8	556.8	20.26
36A-2	180-2	57.15	35.48	35.71	17.46	69.25	73.65	54	7.2	65.84	560.8	652.8	27.62
40A-2	200-2	63.5	37.85	39.68	19.84	75.35	79.65	59.6	8	71.55	693.9	921.6	33.64
48A-2	240-2	76.2	47.35	47.63	23.8	91.5	96.3	71.5	9.6	87.83	1000.8	1190.4	48.31

Q_{min} Kn = Ultimate tensile strenght

Q₀ Kn = Average tensile strength

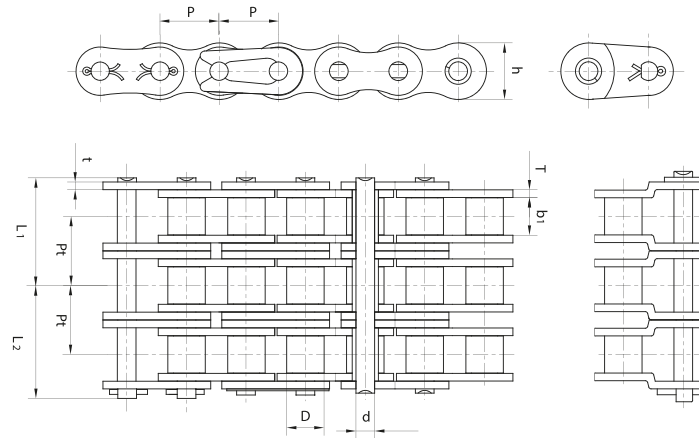
* chains: Bushing chains with no roller;

Connecting Type:

The series less than 16A (including 16A) is preferred for spring clip type;

The series larger than 20A (including 20A) is preferred for cottered type.

A SERIES SHORT PITCH ROLLER CHAINS



DIN/ISO Chain No.	ANSI Chain No.	P mm	B ₁ (min) mm	D (max) mm	d mm	L ₁ mm	L ₂ mm	h mm	t/T mm	Pt mm	Q _{min} kN	Q ₀ kN	q kg/m
*04C-3	*25-3	6.35	3.1	3.3	2.31	10.3	11.2	5.9	0.75	6.4	10.5	12.6	0.42
*06C-3	*35-3	9.525	4.68	5.08	3.58	16.25	17.45	9	1.27	10.13	23.7	30.2	1.03
08A-3	40-3	12.7	7.85	7.92	3.96	22.75	23.95	12	1.52	14.38	41.4	51.3	1.94
10A-3	50-3	15.875	9.4	10.16	5.08	28.25	29.55	15	2	18.11	65.4	88.4	3.11
12A-3	60-3	19.05	12.57	11.91	5.94	35.45	37.35	18	2.4	22.78	93.4	119.7	4.62
16A-3	80-3	25.4	15.75	15.88	7.92	45.46	47.44	23.5	3.2	29.29	166.8	200.1	7.90
20A-3	100-3	31.75	18.9	19.05	9.52	55.6	59.3	30	4	35.76	260.2	327.8	12.01
24A-3	120-3	38.1	25.22	22.23	11.1	70.45	74.05	35.8	4.9	45.44	373.7	484.5	17.68
28A-3	140-3	44.45	25.22	25.4	12.7	75.8	80.1	41.5	5.6	48.87	507.1	607.1	22.26
32A-3	160-3	50.8	31.55	28.58	14.27	90.6	94.4	48	6.4	58.55	667.2	826.5	30.33
36A-3	180-3	57.15	35.48	35.71	17.46	102.15	106.55	54	7.2	65.84	840.6	969	41.3
40A-3	200-3	63.5	37.85	39.68	19.84	111.1	115.4	59.6	8	71.55	1040.9	1368	50.35
48A-3	240-3	76.2	47.35	47.63	23.8	135.4	140.2	71.5	9.6	87.83	1501.3	1767	72.29

Q_{min} Kn = Ultimate tensile strength

Q₀ Kn = Average tensile strength

* chains: Bushing chains with no roller;

Connecting Type:

The series less than 16A (including 16A) is preferred for spring clip type;

The series larger than 20A (including 20A) is preferred for cottered type.